

ELECTRICITY



Build A Future You Control.

Training Makes It Work.

ENROLL NOW!
727.893.2500 X 2326
St. Petersburg Campus

myptc.edu

Refer to www.myptc.edu for specifics on admission requirements, program costs, course content and term starts.

Certificate of Completion awarded once state requirements for program are met.

* O-NET Online Occupational Information Network Data, FL

Mission

Provide students the opportunity to develop national workplace competencies to fill the needs of business and industry.

- Hands-on program taught by industry experienced faculty
- Financial aid available for qualified students
- Small class sizes
- Gain the technical skills needed to work as an Electrician
- Learn step-by-step how to calculate, plan and construct electrical installation using the latest OSHA standards
- Students may earn NCCER certifications throughout the program
- Complete the OSHA-10 safety training, earn a Powder-Actuated Tool License, and earn NCCER certifications in Core and Electrical Levels 1-4
- Electricians earn an average of \$22.96 per hour*

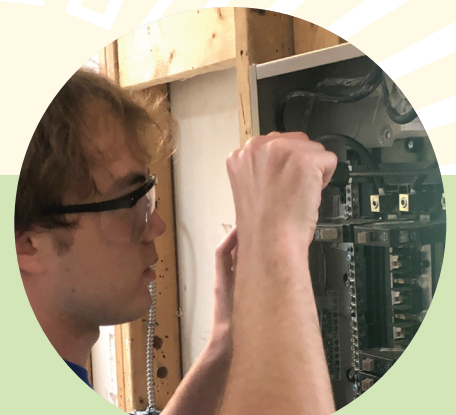
DETAILS

- **1200 HRS** (Approximately 12 months)
- **TUITION – \$3,504**
- **BOOKS, SUPPLIES, FEES – \$2,262** (Estimated)

SCHEDULE

ST. PETERSBURG CAMPUS

901 34TH ST S
ST. PETERSBURG, FL 33711
MON – FRI | 7:00 AM – 12:15 PM



Pinellas County Schools | www.pcsb.org | The School Board of Pinellas County, Florida, prohibits any and all forms of discrimination and harassment based on race, color, sex, religion, national origin, marital status, age, sexual orientation or disability in any of its programs, services or activities.

Accreditation: Council on Occupational Education (COE) | www.council.org | 1.800.917.2081

Cognia Global Commission | www.cognia.org | 1.888.413.3669 (US) | 1.678.392.2285 (Intl)